

GREAT LAKES  
ST. LAWRENCE  
GOVERNORS  
& PREMIERS



---

UNITED FOR GROWTH

# Great Lakes Legislative Caucus

**Peter Johnson**  
**March 14, 2025**



# GSGP Board Members



**Gretchen Whitmer**  
Governor of Michigan  
Chair



**Mike DeWine**  
Governor of Ohio  
Vice Chair



**JB Pritzker**  
Governor of Illinois



**Mike Braun**  
Governor of Indiana



**Tim Walz**  
Governor of Minnesota



**Kathy Hochul**  
Governor of New York



**Doug Ford**  
Premier of Ontario



**Josh Shapiro**  
Governor of Pennsylvania



**François Legault**  
Premier of Québec



**Tony Evers**  
Governor of Wisconsin



Innovation Award

# International and National Awards



President's  
Transportation Award



Advancing International  
Trade Award



President of the United States  
Environment and Conservation  
Challenge Award



Outstanding  
Achievement Award



Seafood Industry  
Climate Award

# Growing the region's economy and protecting the world's greatest freshwater system

International Trade  
Tourism  
Maritime  
100% Fish

GREAT LAKES  
ST. LAWRENCE  
GOVERNORS  
& PREMIERS



---

UNITED FOR GROWTH

Protection and Restoration  
Water Management  
Aquatic Invasive Species  
Trees Initiative

# International Trade and Investment Promotion



- **16 offices worldwide covering over 135 countries**
- **Helping over 1,000 companies each year**
- **Three missions planned for FY26.**
- **Over 725 companies participated in 41 trade missions since 2004**
- **Webinar series**

**1,000 B2B meetings**  
scheduled  
each year



**\$2.45 billion** in  
facilitated export  
sales 2016-2024

**41 GSGP Led**  
Trade Missions



# Tourism

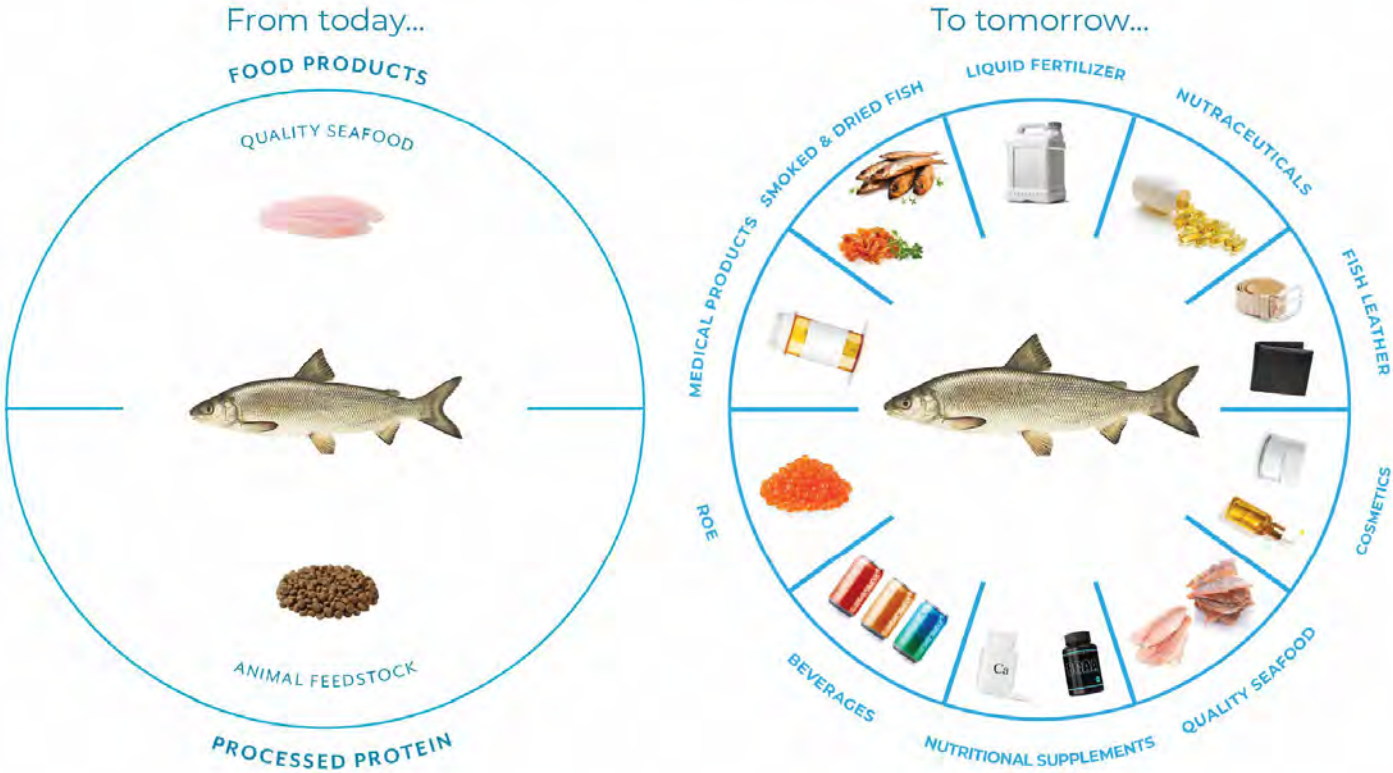
- Tens of millions of tourists visit the Great Lakes St. Lawrence region each year.
- Tourism helps drive economic growth, creates jobs and showcases our region's diverse attractions to visitors.
- The Great Lakes St. Lawrence Governors & Premiers are committed to growing this important part of the regional economy and to attracting even more tourists to the region.
- Two complementary programs target different tourist markets:
  - Cruise the Great Lakes
  - Great Lakes USA



# 100% Great Lakes Fish



## 100% Great Lakes Fish



Funders:



# The Icelandic Model

## Driving a New Fish Economy

**Cod biomass utilization increase from 40% to more than 90%**

**New high-value byproducts such as skin and collagen that are processed into a variety of food and non-food products**

**A cod that used to generate US\$12 for filets now generates a remarkable US\$5000 per fish in expanded value!**

**Model now being applied globally**





# 100% Great Lakes Fish Pledge

GREAT LAKES  
ST. LAWRENCE  
GOVERNORS  
& PREMIERS



BIG STONE BAY FISHERY



EST. 1983



# Restoration and Protection Progress

- **Developed a comprehensive restoration strategy through the Great Lakes Regional Collaboration, which united the region's Governors, members of Congress, the Administration, Mayors, Tribal leaders and more than 1500 stakeholders.**
- **Secured nearly \$4 billion in new federal funding provided to implement the restoration strategy and tackle some of the region's costliest challenges**





## Water Management

- Created the Great Lakes Compact, which ensures that our waters are used sustainably and remain at healthy levels.
- Bans new diversions of water from the Basin but limited exceptions when rigorous standards are met.
- Put in place a regional structure to promote water conservation and efficiency.



# Great Lakes – St. Lawrence River Basin Sustainable Water Resources Agreement of 2005

- **Good-faith agreement among the Great Lakes Governors and Premiers**
- **Created Regional Body**
- **State and Provincial implementation**
  - **Provincial action**
  - **Interstate Compact**





# Great Lakes Compact and Agreement

**Managing Water Use**

**Water Diversions**

**Water Use Efficiency & Conservation**

**Science and Research**

**Water Use Reporting**

# Aquatic Invasive Species

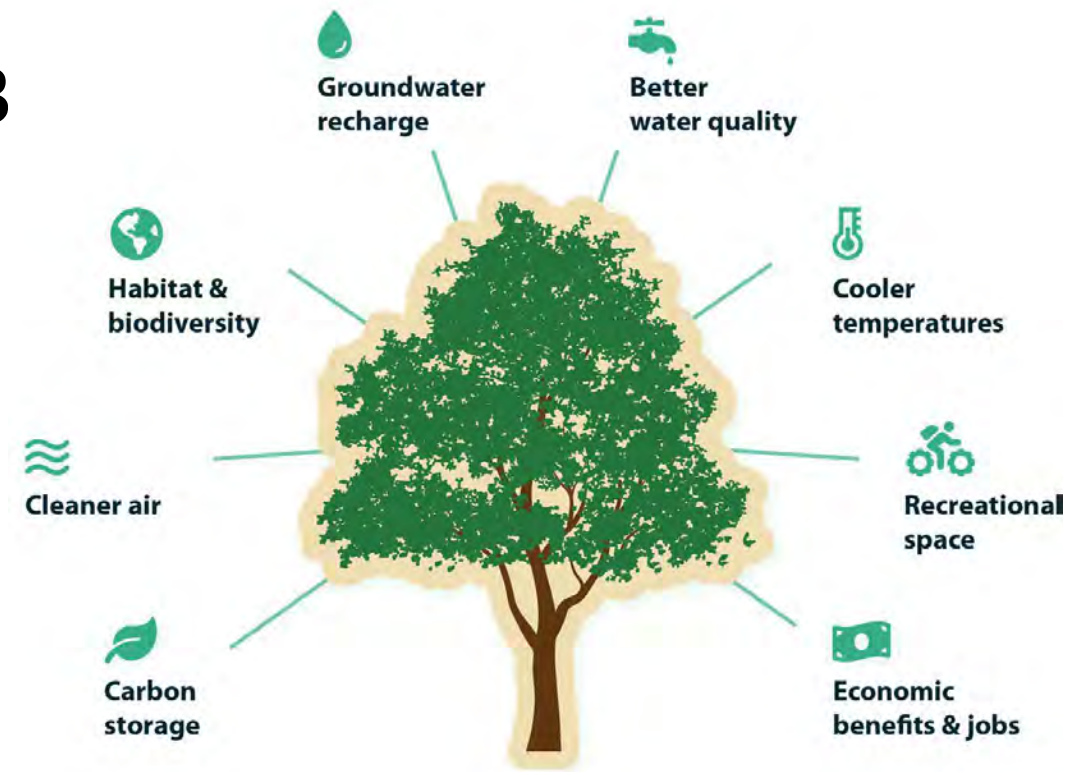
- **The Great Lakes and St. Lawrence Governors' and Premiers' Aquatic Invasive Species Task Force works to stop the introduction and spread of aquatic invasive species (AIS) into the Great Lakes St. Lawrence River Basin and protect the region's \$7 billion fishery.**
- **Priorities include:**
  - **Taking aggressive action against high-risk AIS**
  - **Promoting regional cooperation among AIS experts, fisheries experts, and law enforcement officials**



# Great Lakes St. Lawrence Region Trees Initiative

## Goal to plant 250 million trees by 2033

- Support for State and Provincial tree planting programs.
- Building key partnerships and catalyzing high-impact projects.
- Developing a structure to track and quantify the many benefits of tree planting.
- Strategies and policies to maximize benefits and the “return on investment.”



# Green Events



Encourages destination stewardship and environmentally beneficial practices for conferences and events in the Great Lakes St. Lawrence region.

## Green Events Hosts...

- Implement sustainable practices such as, eliminating single-use plastics, reducing paper and limiting food waste at the event.
- Make a financial contribution to the Great Lakes St. Lawrence Trees Initiative to support on-the-ground partners planting trees in local communities.





# Green Events and Partners



GREAT LAKES  
ST. LAWRENCE  
GOVERNORS  
& PREMIERS



# GSGP Staff



**David Naftzger**  
Executive Director



**Peter Johnson**  
Deputy Director



**Cathy Domanico**  
Tourism Director



**Mike Piskur**  
Program Director



**Zoë Munro**  
Program Director



**John Schmidt**  
Program Manager



**Cailyn Andrews**  
Program Manager



**SAVE THE DATE**  
GSGP Leadership Summit  
October 4-6, 2025

**“An Agenda for Growth”**





PETER JOHNSON



312.305.4133



[PJOHNSON@GSGP.ORG](mailto:PJOHNSON@GSGP.ORG)



[GSGP.ORG](http://GSGP.ORG)