



Great Lakes-St. Lawrence Legislative Caucus Web-Meeting

December 14, 2018 | 10 am EST/9 am CST



GREAT LAKES-ST. LAWRENCE
LEGISLATIVE CAUCUS



MIDWEST



Housekeeping

- This event is being recorded. The recording will be available later today at www.greatlakeslegislators.org
- To reduce noise on the phone lines, all participants will be in “listen-only” mode during the presentations.
- There will be time for questions after the presentations.
 - Click on the “raise hand” icon in the webinar console, or
 - Type questions using the “questions” pane in the webinar console.
- If you wish to speak, you must enter the audio PIN.



Agenda

Welcome and Introductions

Michigan Senator Darwin Booher, Chair, Great Lakes-St. Lawrence Legislative Caucus

Featured Presentation

Documenting Results through Blue Accounting

Victoria Pebbles, Program Director, Great Lakes Commission

Business Session

- Report on Lead Reduction Action Plan
- 2019 Activities
 - Event Dates
 - Opportunities for Members
 - Member Survey and Recruitment
- Leadership Transition

Adjourn



About the GLLC

- The GLLC is a binational, nonpartisan group of state and provincial lawmakers from the Great Lakes region.
 - Eight U.S. states: Illinois, Indiana, Michigan, Minnesota, New York, Pennsylvania, Ohio and Wisconsin
 - Two Canadian provinces: Ontario and Québec
- The Caucus has three primary goals:
 - Facilitate the regional exchange of ideas and information on key Great Lakes issues;
 - Strengthen the role of state and provincial legislators in the policymaking process; and
 - Promote the restoration and protection of the Great Lakes.

Featured Speaker

Victoria Pebbles

Program Director

Great Lakes Commission

vpebbles@glc.org

(734) 396-6079





Blue Accounting ErieStat

Tracking Progress Toward a Healthier Lake Erie



Blue Accounting ErieStat

Great Lakes-St. Lawrence Legislative Caucus

December 14, 2018



Great Lakes Commission des Grands Lacs

A unified voice for the states and provinces

Great Lakes Commission

- Interstate compact agency established by the Great Lakes Basin Compact in 1955
- Received US Congressional consent in 1968
- Ontario and Québec joined in 1999

The Great Lakes Basin Compact purposes

(excerpted from Article I)

1. To promote the orderly, integrated, and comprehensive development, use, and conservation of the water resources of the Great Lakes.
2. To plan for the welfare and development of the water resources of the Basin.
3. To make it possible for the states of the Basin and their people to derive the maximum benefit from utilization of public works.
4. To advise in securing and maintaining a proper balance among industrial, commercial, agricultural, water supply, residential, recreational, and other legitimate uses of the water resources of the Basin.
5. To establish and maintain an intergovernmental agency the end that the purposes of this compact may be accomplished more effectively.

Great Lakes Commission Powers

(excerpted from Article VI)

- Collect and report data
- Recommend methods for orderly, efficient, balanced development, use and conservation
- Consider need for public works and improvements
- Consider means of improving and maintaining navigation and ports
- Consider means of improving fisheries
- Recommend uniform laws, ordinances, regulations
- Recommend compact amendments and supplementary agreements
- Cooperate with US, Canada, and party states

Great Lakes Commission

- 3-5 commissioners from each of the 10 states and provinces, including GLLC members:
 - Senator Rebekah Warren
 - Senator Carrie Ruud
 - Senator Ann Rest
 - Representative Jennifer Schultz
 - Representative Paul Torkelson
 - Representative Patrick J. Harkins

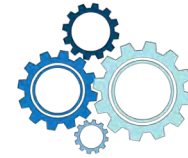


Executive Director Darren Nichols, dnichols@glc.org



The Great Lakes provide
**DRINKING WATER FOR
48 MILLION PEOPLE**, fuel a
**\$5 TRILLION REGIONAL
ECONOMY**, and create
**AN INVALUABLE SENSE OF HOME
AND COMMUNITY**
for the basin via their scenic beauty and recreation.

**Social, Economic and
Environmental Issues**



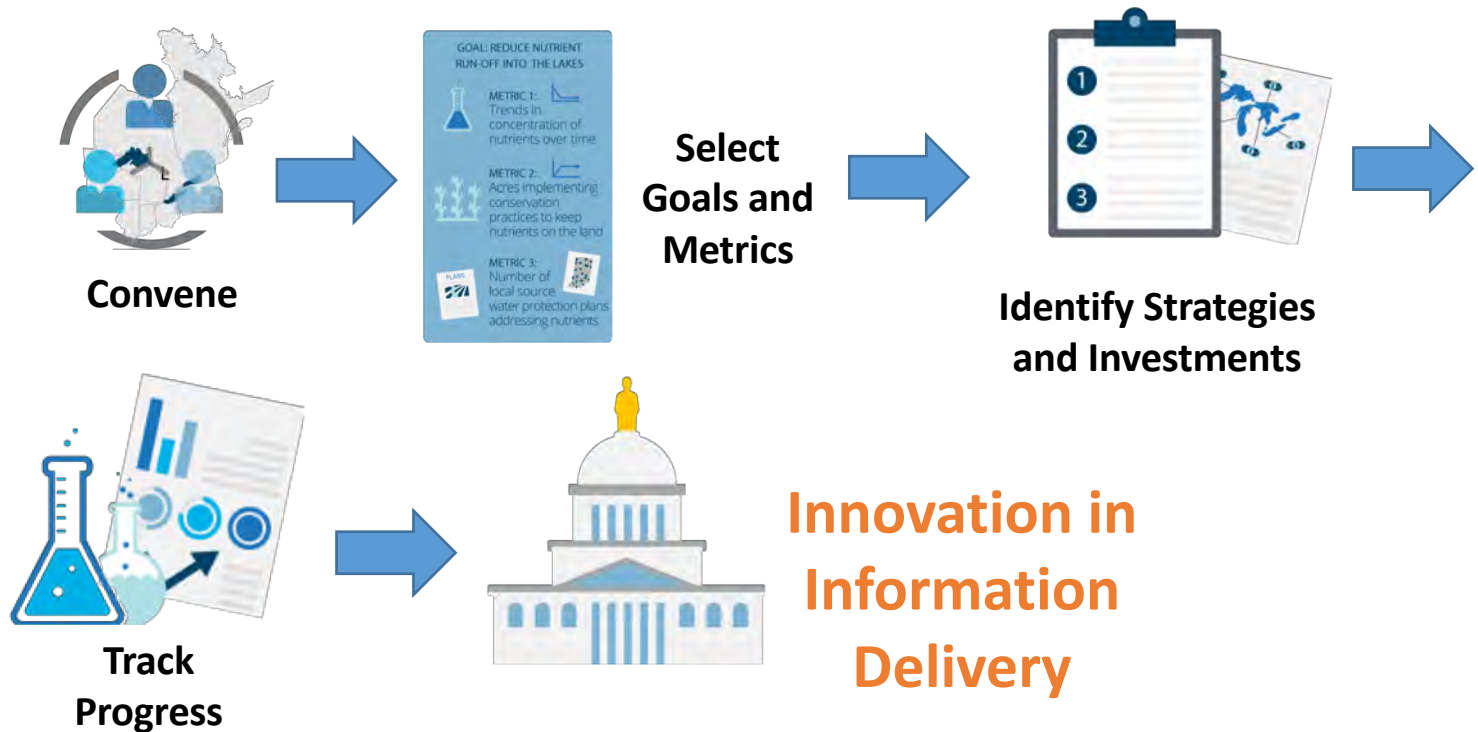
The government agencies of
**TWO COUNTRIES,
EIGHT STATES, TWO
PROVINCES, AND
249 COUNTIES**,
as well as hundreds of NGOs and private
businesses, make decisions that affect the lakes.
**WE MUST WORK
TOGETHER TO SUCCEED.**

**Institutional and Leadership
Cooperation**

Do our investments get us to the outcomes we desire?

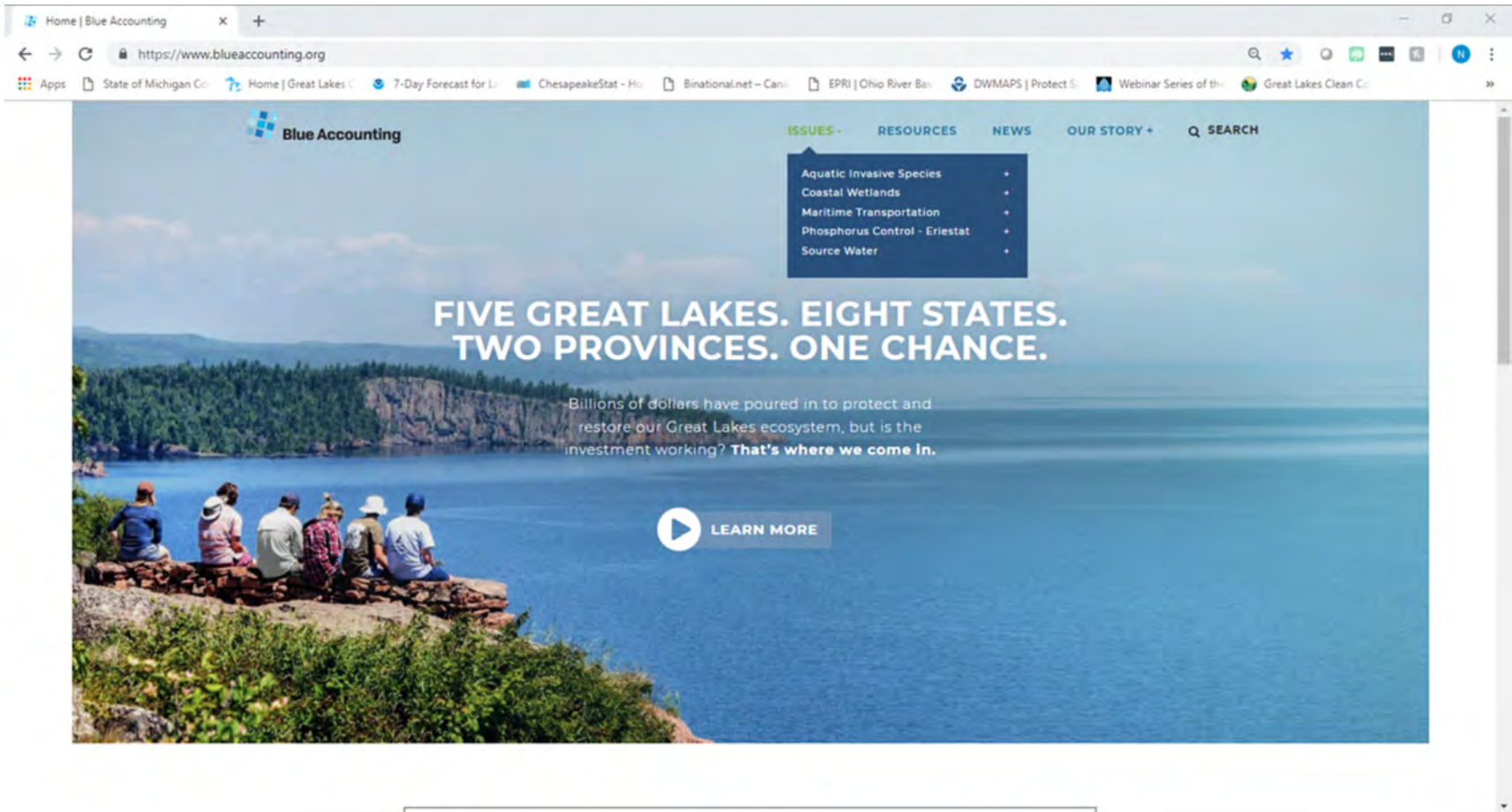


How Blue Accounting Works





www.blueaccounting.org





Blue Accounting ErieStat



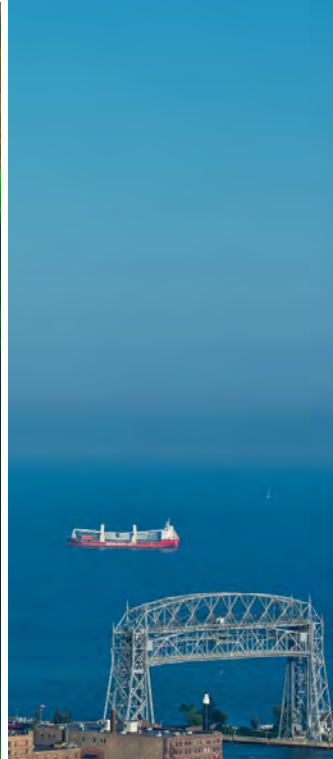
Aquatic Invasive Species



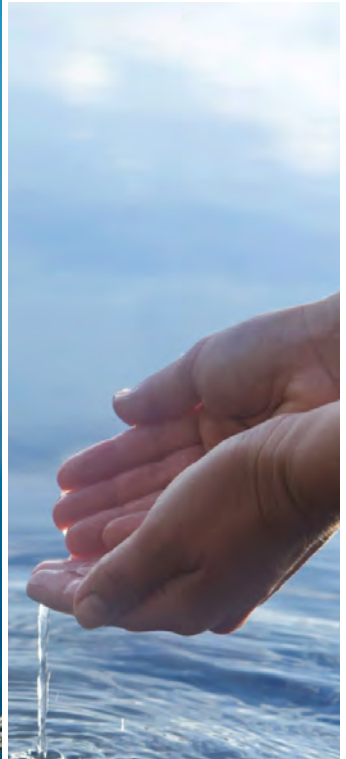
Coastal Wetlands



ErieStat



Maritime Transportation



Source Water



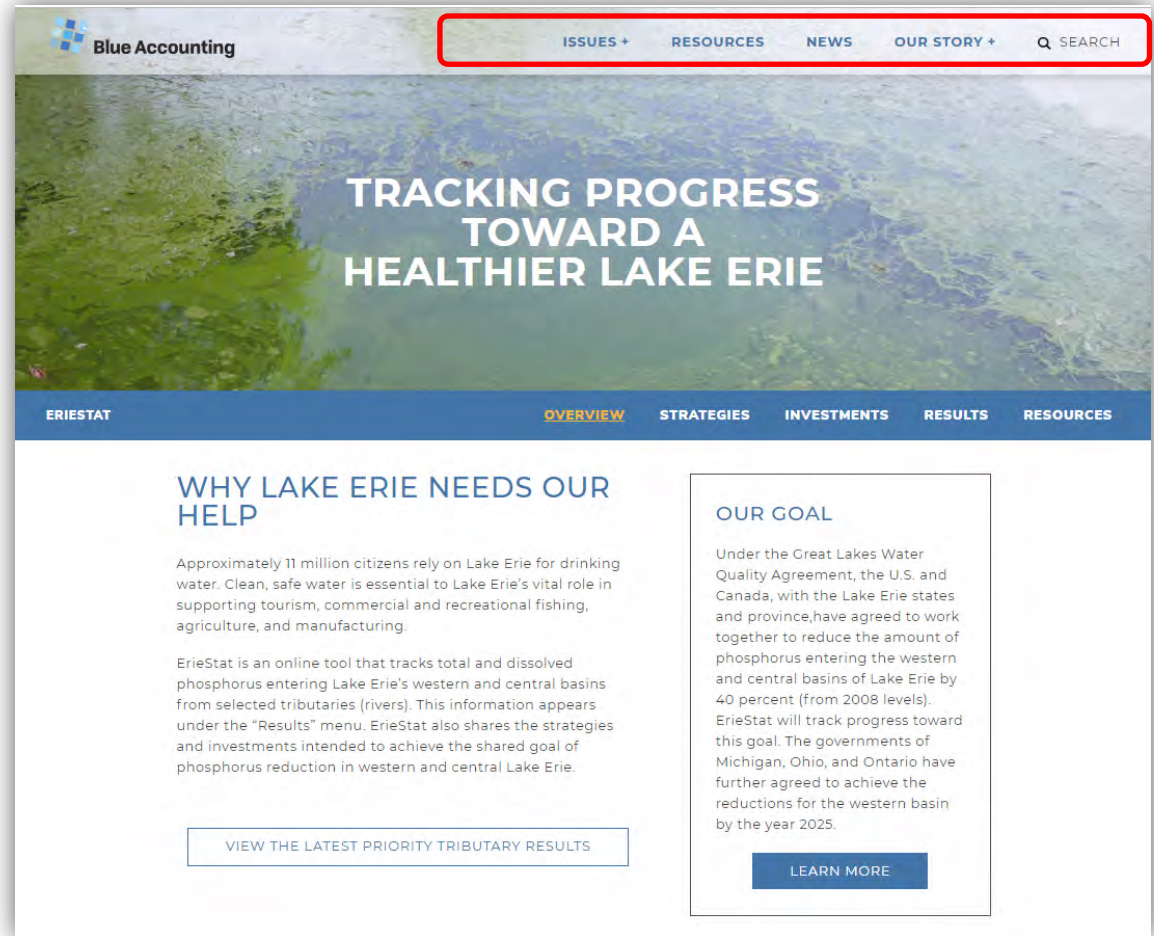
Steering Committee

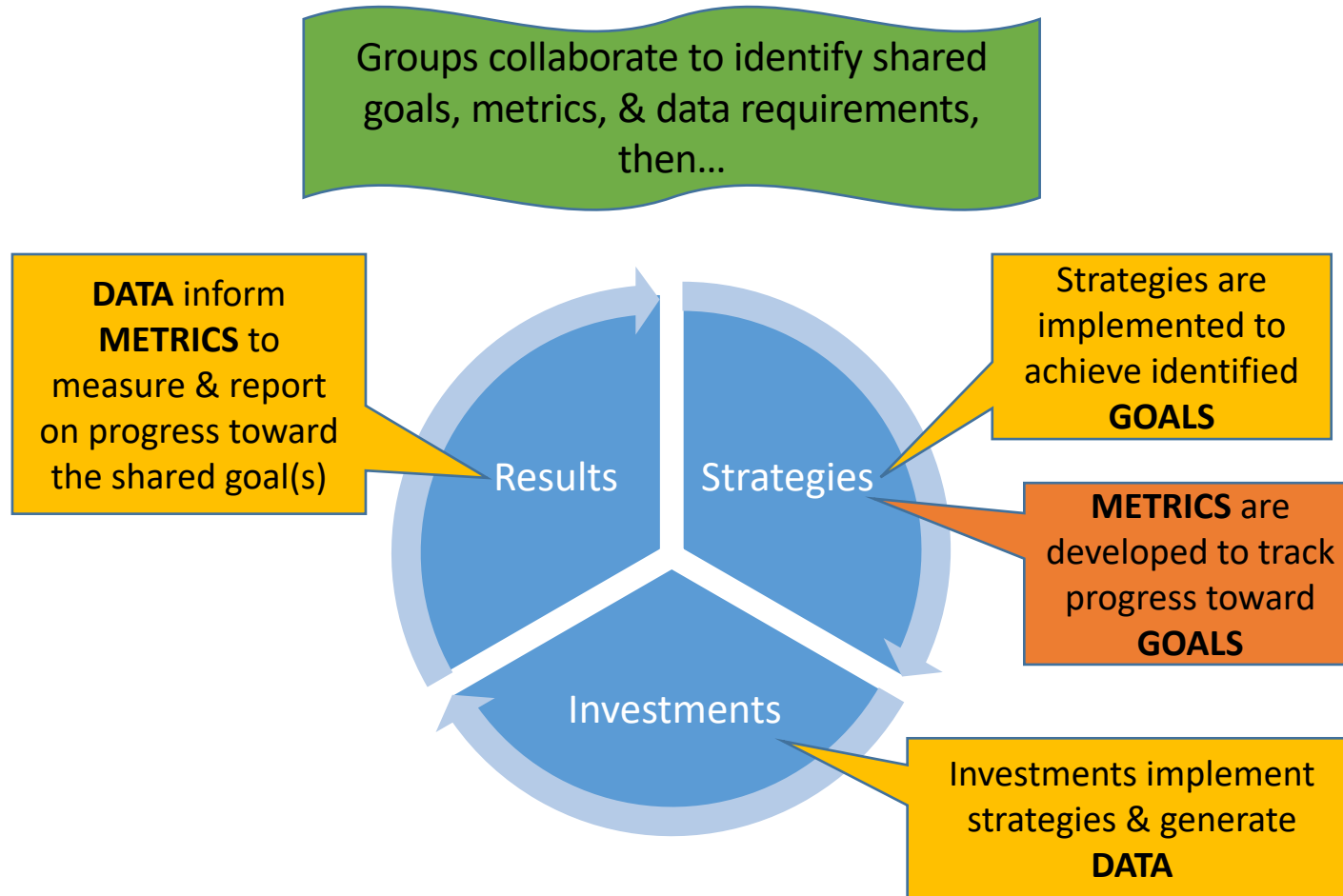
- Marylou Renshaw, Indiana Department of Environmental Management
- Michelle Selzer, Michigan Department of Natural Resources
- Sandra Kosek-Sils, Ohio Lake Erie Commission
- Tim Bruno, Pennsylvania Department of Environmental Protection
- Don Tuxhill, New York Department of Environmental Conservation
- Santina Wortman, Environmental Protection Agency
- Ontario and Canada representatives – to be determined

Topical sub-groups and newly-formed Content Advisory Group also provide direction

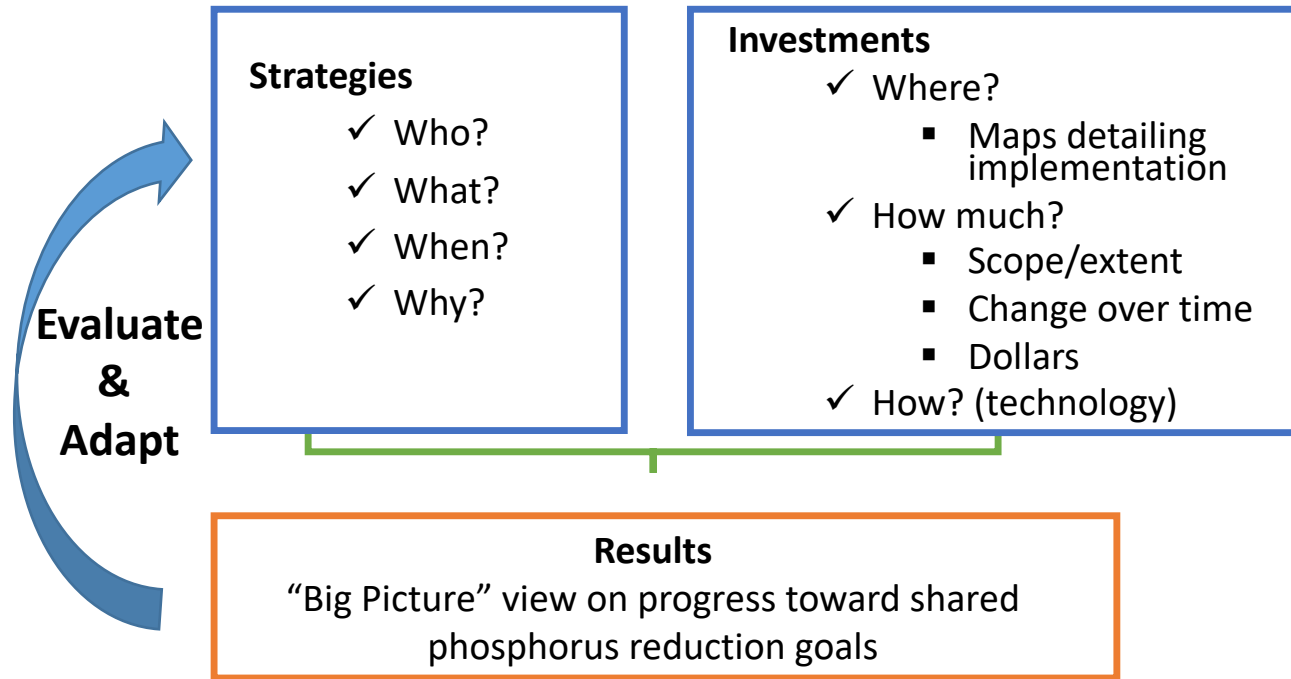
Website structure

- Overview
- Strategies
- Investments
- Results
- Resources



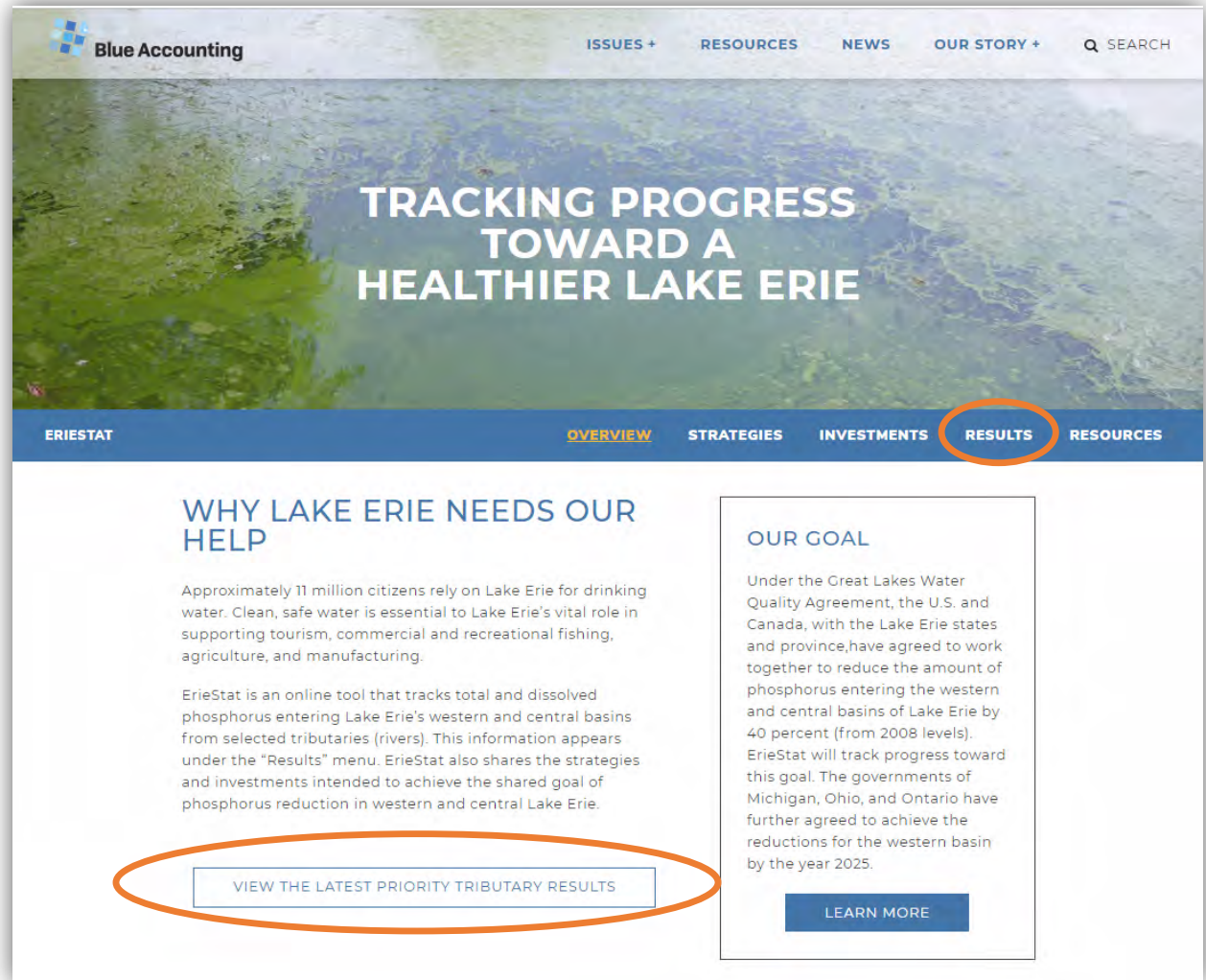


Supporting the Adaptive Management Process



Website structure

- Overview
- Strategies
- Investments
- **Results**
- Resources



The screenshot shows the Blue Accounting website interface. The top navigation bar includes 'Blue Accounting', 'ISSUES +', 'RESOURCES', 'NEWS', 'OUR STORY +', and a search icon. The main header features a large image of Lake Erie with the text 'TRACKING PROGRESS TOWARD A HEALTHIER LAKE ERIE'. Below this is a blue navigation bar with 'ERIESTAT', 'OVERVIEW', 'STRATEGIES', 'INVESTMENTS', 'RESULTS' (circled in orange), and 'RESOURCES'. The main content area is divided into two columns. The left column is titled 'WHY LAKE ERIE NEEDS OUR HELP' and contains two paragraphs of text. Below this text is a button labeled 'VIEW THE LATEST PRIORITY TRIBUTARY RESULTS' (circled in orange). The right column is titled 'OUR GOAL' and contains a paragraph of text and a 'LEARN MORE' button.



Results: Spring Phosphorus Targets

The screenshot shows the Blue Accounting website interface. At the top, there is a navigation bar with 'ERIESTAT', 'OVERVIEW', 'EDIT', 'STRATEGIES', 'INVESTMENTS', 'RESULTS' (highlighted in yellow), and 'RESOURCES'. Below this is a secondary navigation bar with 'ISSUES +', 'RESOURCES', 'NEWS', 'OUR STORY +', and a search icon labeled 'SEARCH'. The main content area features a map of the Lake Erie basin with several watersheds highlighted in green. To the right of the map, there is a text box with the following content:

The U.S. and Canada set phosphorus reduction goals (40 percent of 2008 loads) for eight priority tributary watersheds for both total and soluble reactive phosphorus (SRP) during March-July. SRP refers to phosphorus that is in a dissolved state and is of particular interest because it is the easiest form of phosphorus for algae to use to fuel growth.

The targets for these tributaries are expressed in terms of the flow weighted mean concentration (FWMC) – which is a way to normalize the load for flow. This is important because much of the load is delivered during storm events. It means that efforts to reduce the load must also include efforts to reduce the amount of flow (runoff). FWMC also provides an important backstop and relative measure of whether phosphorus control efforts are actually having an impact. For example, in a dry year the load may be low due to less runoff, but the FWMC will still be high if the proportion of phosphorus in that runoff is high.

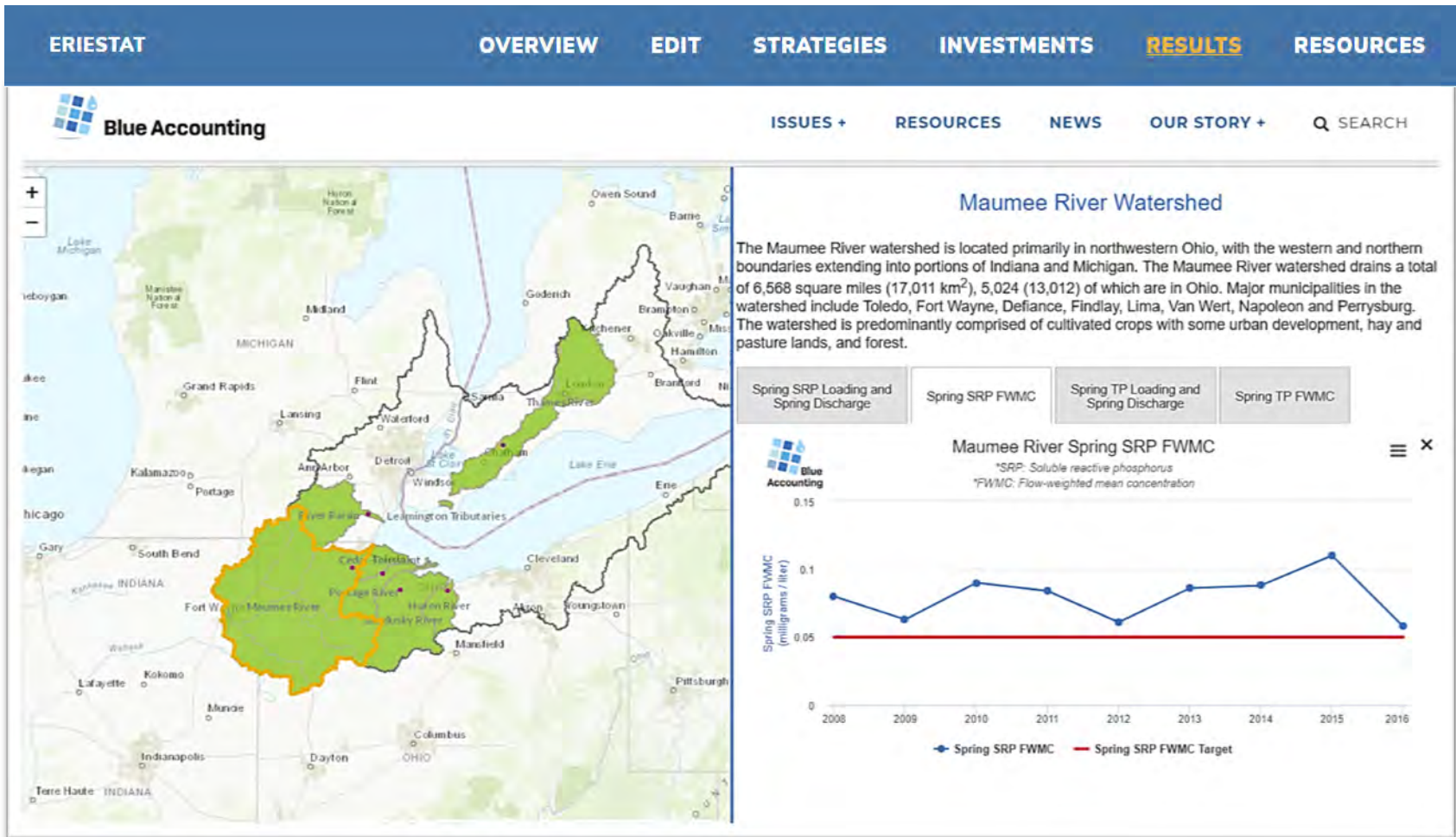
The calculation of spring load requires high frequency flow and water quality monitoring, which is now in place for all nearshore priority tributaries. Not all tributaries had monitoring in place going back to 2008.

Click on the watershed of interest to see available data.

<https://www.blueaccounting.org/result/spring-phosphorus-targets>



Results: Maumee Spring Phosphorus



Looking forward

- Further develop Strategies content
- Add Investments
- Enhance results to include metrics for land and improved lake metrics
- Continue to build strategic partnerships

Next steps for GLLC

ErieStat:

- Continued engagement through Content Advisory Group (Lisa Janairo is a member)
- Appoint staff to serve on sub-groups

Blue Accounting

- Regular briefings from GLC during Policy Institute
- Consider role on Blue Accounting Advisory Committee
- Provide feedback on content on site and what would be useful to you, your staff, and your constituents

Interested? Have other ideas?

Contact Tawny Mata, Director of Strategic Engagement at tawny.mata@tnc.org



Blue Accounting ErieStat

Questions?

www.blueaccounting.org



Lead Reduction Action Plan

- **2018 Great Lakes-St. Lawrence Policy Institute**
 - Pilot of a new core activity to address issues on the Caucus's policy agenda
 - Focus on eliminating lead in drinking water
- **Outcomes**
 - Long-term: State and provincial policies to reduce exposure to lead in drinking water
 - Near-term: Position statement and action plan
- **Task Force on Lead**



Lead Reduction Action Plan

- **Action Plan**

- Phase 1

- Test all schools (pre-K through 12) and all licensed childcare facilities, including daycare homes, and group daycare homes for lead in drinking water.
- Increase public awareness/education about the dangers of lead in drinking water, such as lead content in fixtures, efficacy of lead testing, and labeling of filters.
- Encourage an inventory of lead service lines and future management plans in each municipality.
- Evaluate the EPA's Lead and Copper Rule and any proposed changes.



Lead Reduction Action Plan

- **Action Plan**

- Phase 2: Increase investment in lead service line replacement.
 - Identify existing sources of funding.
 - Improve access to affordable financing for private service line replacement.

Lead Reduction Action Plan

● Next Steps for the Task Force on Lead

- Recruit new members to represent Michigan, New York, and the provinces of Ontario and Québec
- Complete the data gathering project
- Conference call on January 18 to review the essential elements
- Distribute Action Plan and essential elements to GLLC members
- Report on progress during March 1 web-meeting
- Gather for workshop in Chicago in conjunction with the 2019 Annual Meeting of the GLLC in September
- Arrange a session on lead in drinking water at the Annual Meeting
- Sponsor a session at the Midwestern Legislative Conference Annual Meeting in July, also in Chicago

The 2018 pilot Great Lakes-St. Lawrence Policy Institute was made possible by a generous grant from the Joyce Foundation.



2019 Activities

- **Event Dates**

- Patricia Birkholz Institute for Great Lakes-St. Lawrence Policy in late 2019 in Michigan
- GLLC 2019 Annual Meeting in Chicago on September 13-14
- Quarterly Web-Meetings on March 1, June 7, September 6, and December 6



2019 Activities

- **Opportunities for Members**
 - Serve on committees or task forces
 - Task Force on Lead
 - Birkholz Institute Steering Committee
 - Great Lakes-St. Lawrence Appreciation Day Task Force
 - Represent the GLLC at various events
- **Member Survey and Recruitment**



Leadership Transition

Executive Committee 2017-2018



Representative David Maturen
Michigan



Representative Dan Ramos
Ohio



Representative Nick Milroy
Wisconsin

GLLC Officers 2019-2020



Senator Ed Charbonneau
Indiana
Chair



Representative Robyn Gabel
Illinois
Vice Chair

ILLINOIS



Representative Laura Fine

INDIANA



Senator Rick Niemeyer

MICHIGAN



**Representative Curt
VanderWall**

MINNESOTA



**Representative Jennifer
Schultz**

NEW YORK



**Assemblyman Peter
Lawrence**

OHIO



Representative Kent Smith

PENNSYLVANIA



Representative Curt Sonney

WISCONSIN



**Representative Beth
Meyers**

PAST CHAIR



**Senator Ann H. Rest,
Minnesota**

Thank you for attending!

***Please join us at this same
time on March 1, 2019!***

Great Lakes-St. Lawrence Legislative Caucus Web-Meeting

December 14, 2018 | 10 am EST/9 am CST



GREAT LAKES-ST. LAWRENCE
LEGISLATIVE CAUCUS



MIDWEST