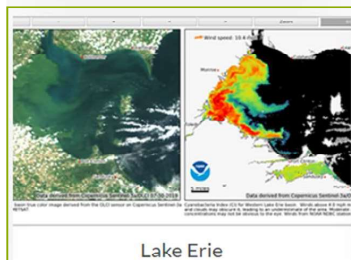
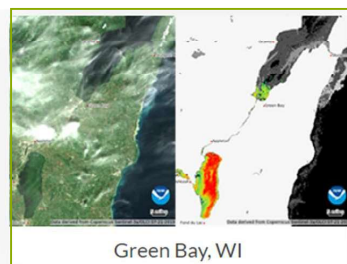
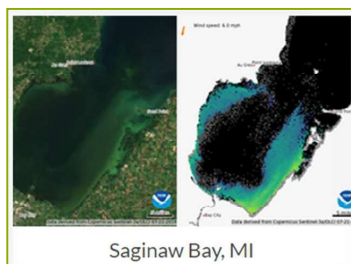


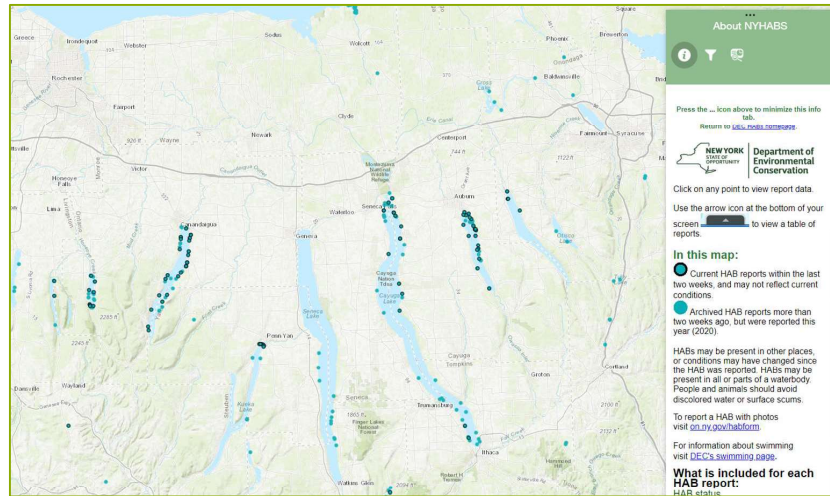
## GLLC Task Force on Nutrient Management

- Background
  - Birkholz Institute
  - GLLC Resolution, Action Plan
- Model Policies
  - Agriculture
  - Education and Outreach
  - Accountability
  - Green Infrastructure
- Plans for 2021
  - Legislative Activity (data gathering, legislation)
  - Educational Activities (e.g., GLLC Web Meetings)
  - Task Force Workshop

## GLLC Task Force on Nutrient Management



# GLLC Task Force on Nutrient Management



# GLLC Task Force on Nutrient Management

- Background
  - Birkholz Institute
  - GLLC Resolution, Action Plan
- Model Policies
  - Agriculture
  - Education and Outreach
  - Accountability
  - Green Infrastructure
- Plans for 2021
  - Legislative Activity (data gathering, legislation)
  - Educational Activities (model programs, Blue Accounting, Conservation Kick)
  - Task Force Workshop

## Model Policies - Agriculture

- Engage with and incentivize agricultural producers to adopt best practices for managing nutrients
  - Establish **voluntary conservation certification programs** for agricultural operations (Michigan Agriculture Environmental Assurance Program, Minnesota Agricultural Water Quality Certification Program).
  - **Require verification** that producers are following best management practices.
  - Adopt **innovative financing mechanisms** to increase the number of farms participating in the program.
  - Allow state and provincial funding to be used for **investments in machinery and equipment** to improve the management of nutrients.
- Establish and promote competitive agricultural producer-led watershed management grants (Wisconsin Producer-Led Watershed Protection Grant Program)

## Model Policies - Education and Outreach

- Engage in educational and outreach activities to share information on the causes and impacts of nutrient pollution and the role each person can play in reducing the problem
  - Promote **collaboration** across roles, sectors, and branches of government to involve all responsible parties and affected stakeholders, including members of the public and researchers, **in evaluating the effectiveness of public policies** intended to reduce nutrient pollution.
  - Encourage efforts to **educate** agricultural producers, local governments officials, and members of the public regarding the **impact** of nutrient pollution on water quality and **best management practices** for reducing polluted runoff.
  - Require **green infrastructure** to be included in education and outreach programs for discharge permits (NPDES, for states) and establish green infrastructure as a preferred best management practice

## Model Policies – Accountability

- Ensure accountability for investments made by collaborating with other jurisdictions to define metrics and assess collective progress
  - Designate an **agency liaison to the Great Lakes Commission** for the purposes of:
    - Working with the Commission to define a **regional set of metrics** for reporting on progress in reducing nutrient pollution.
    - Reporting results to the Commission at least annually for posting on the **Blue Accounting** platform.
  - Require agencies to **make progress reports publicly accessible** on agency web sites.

## Model Policies – Green Infrastructure

- Include the installation of green infrastructure among the tools used to improve the management of nutrients
  - Expressly authorize and streamline procedures for the creation of **storm water utilities**.
  - Establish **enforceable post-construction requirements** that set specific stormwater runoff quality and/or quantity standards.

# GLLC Task Force on Nutrient Management

- Background
  - Birkholz Institute
  - GLLC Resolution, Action Plan
- Model Policies
  - Agriculture
  - Education and Outreach
  - Accountability
  - Green Infrastructure
- Plans for 2021
  - Legislative Activity (data gathering, legislation)
  - Educational Activities (model programs, Blue Accounting, Conservation Kick)
  - Task Force Workshop